

Shellfish

- [Scallops \(*Chlamys islandica*\)](#)
- [Coldwater shrimp \(*Pandalus borealis*\)](#)
- [Scampi / Langoustine \(*Nephrops norvegicus*\)](#)

Scallops (*Chlamys islandica*)



Icelandic scallops can be found all around Iceland, but are primarily taken from the region of the western and northwestern fjords. The normal habitat is a hard sea bottom at depths of 15 to 80m. They are most abundant in fairly strong, nutrient rich currents where they filter-feed on phytoplankton and small zooplankton. Scallops grow rather slowly and mainly in the spring and early summer months. The Iceland scallop reaches maturity at five to

seven years old.

Main catching seasons:

Scallops - Chlamys islandica

Jan	Feb	Mar	Apr	May	Jun	Jul	Aug	Sep	Oct	Nov	Dec
H	H	H	S	S	S	S	S	H	H	H	H

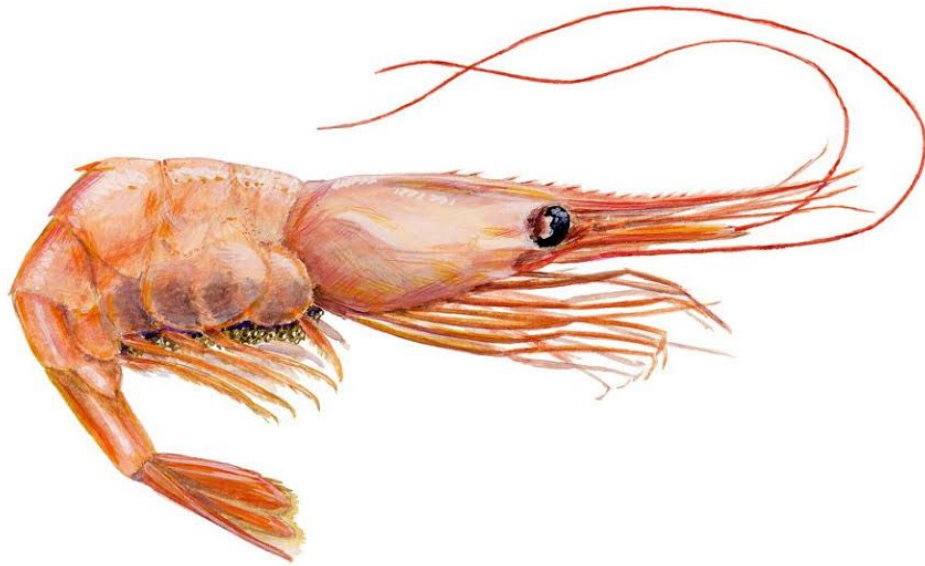
H = High season L= Low season S = Stop

Specification:

- Roe off → 30-40 | 40-60 | 60-80 → pcs/lbs → IQF
- Frozen at land

[Back to top](#)

Coldwater Shrimp (*Pandalus borealis*)



Coldwater or “Northern” shrimp are a sub-arctic species of shrimp found in the North Atlantic and North Pacific. Around Iceland, they are found primarily along the southwestern coast and in high concentrations in the bays and fjords of Northern Iceland. This is a fascinating shrimp that, at sexual maturity is a male, but later changes genders and turns female between the ages of two and six years old.

Main catching seasons:

Coldwater shrimp - Pandalus borealis

Jan	Feb	Mar	Apr	May	Jun	Jul	Aug	Sep	Oct	Nov	Dec
L	L	L	H	H	H	H	L	L	L	L	L

H = High season L= Low season S = Stop

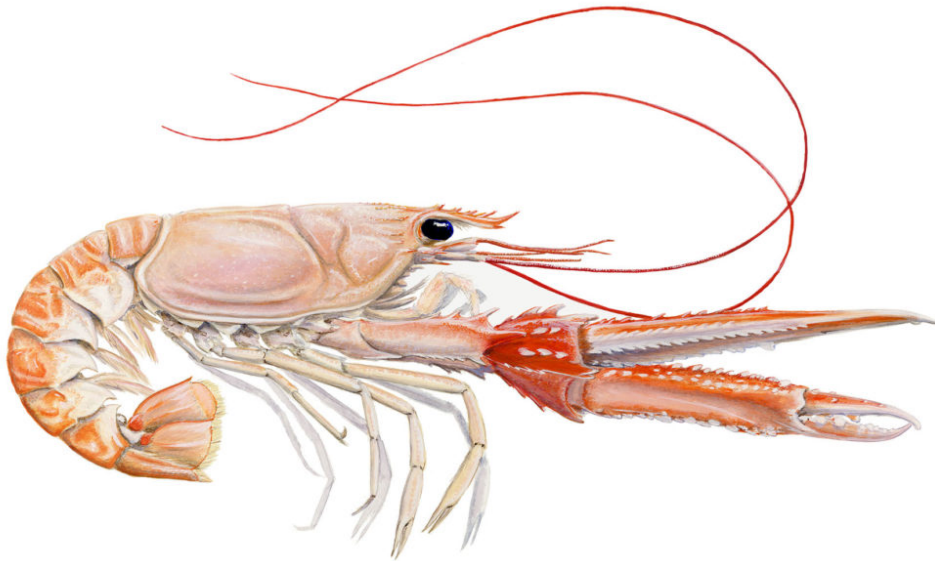
Specification:

- Shell on → 70-90 | 80-100 | 90-120 | 120-150 | 150+ → pcs/kg → IQF | Block frozen
- Cooked and peeled → 100-200 | 150-250 | 200-300 | 250-350 | 275-375 | 300-500 | 400-600 | 500-800 | 800+→ pcs/lbs → IQF

- Frozen at sea | Frozen at land

[Back to top](#)

Scampi / Langoustine (*Nephrops norvegicus*)



Scampi or langoustine, are widespread across the Northeast Atlantic. Around Iceland they are typically found along the Southern coast. Scampi are small in comparison to other lobster species. The scampi found in Icelandic waters, however, are quite large compared to those scampi found in other, European waters.

Main catching seasons:

Scampi - Nephrops norvegicus

Jan	Feb	Mar	Apr	May	Jun	Jul	Aug	Sep	Oct	Nov	Dec
L	L	L	H	H	H	H	H	H	L	L	L

H = High season L= Low season S = Stop

Specification:

- Whole → Hand laid → IQF | Block frozen
- Tails → IQF | Block frozen
- Frozen at land

[Back to top](#)